

# **MATLAB<sup>®</sup> Report Generator Release Notes**

---



<b>Summary by Version</b> .....	<b>1</b>
<b>Version 3.2.1 (R2007b) MATLAB Report Generator</b> ....	<b>4</b>
<b>Version 3.2 (R2007a) MATLAB Report Generator</b> .....	<b>5</b>
<b>Version 3.1 (R2006b) MATLAB Report Generator</b> .....	<b>6</b>
<b>Version 3.0.1 (R2006a+) MATLAB Report Generator</b> ...	<b>7</b>
<b>Version 3.0 (R2006a) MATLAB Report Generator</b> .....	<b>8</b>
<b>Version 2.3.1 (R14SP3) MATLAB Report Generator</b> ...	<b>9</b>
<b>Version 2.3 (R14SP2+) MATLAB Report Generator</b> ....	<b>10</b>
<b>Version 2.2 (R14SP1+) MATLAB Report Generator</b> ....	<b>13</b>
<b>Version 2.1 (R14+) MATLAB Report Generator</b> .....	<b>16</b>
<b>Version 2.0 (R14) MATLAB Report Generator</b> .....	<b>18</b>
<b>Version 1.3 (R13) MATLAB Report Generator</b> .....	<b>21</b>
<b>Compatibility Summary for MATLAB Report Generator</b> .....	<b>22</b>



## Summary by Version

This table provides quick access to what's new in each version. For clarification, see “About Release Notes” on page 2.

<b>Version (Release)</b>	<b>New Features and Changes</b>	<b>Version Compatibility Considerations</b>	<b>Fixed Bugs and Known Problems</b>	<b>Related Documentation at Web Site</b>
<b>Latest Version V3.2.1 (R2007b)</b>	Yes Details	No	Bug Reports Includes fixes	Printable Release Notes: PDF  Current product documentation
V3.2 (R2007a)	Yes Details	No	Bug Reports Includes fixes	No
V3.1 (R2006b)	Yes Details	No	Bug Reports Includes fixes	No
V3.0.1 (R2006a+)	No	No	Bug Reports Includes fixes	No
V3.0 (R2006a)	Yes Details	Yes Summary	Bug Reports Includes fixes	No
V2.3.1 (R14SP3)	Yes Details	No	Bug Reports Includes fixes	No
V2.3 (R14SP2+)	Yes Details	No	Bug Reports Includes fixes	No
V2.2 (R14SP1+)	Yes Details	Yes Summary	No bug fixes	No
V2.1 (R14+)	Yes Details	No	No bug fixes	No
V2.0 (R14)	Yes Details	Yes Summary	“Known Problems” on page 20	No
V1.3 (R13)	Yes Details	No	No bug fixes	Yes

## About Release Notes

Use release notes when upgrading to a newer version to learn about new features and changes, and the potential impact on your existing files and practices. Release notes are also beneficial if you use or support multiple versions.

If you are not upgrading from the most recent previous version, review release notes for all interim versions, not just for the version you are installing. For example, when upgrading from V1.0 to V1.2, review the New Features and Changes, Version Compatibility Considerations, and Bug Reports for V1.1 and V1.2.

## New Features and Changes

These include

- New functionality
- Changes to existing functionality
- Changes to system requirements (complete system requirements for the current version of MATLAB® Report Generator are at the MathWorks Web site)
- Any version compatibility considerations associated with each new feature or change

## Version Compatibility Considerations

When a new feature or change introduces a reported incompatibility between versions, its description includes a **Compatibility Considerations** subsection that details the impact. For a list of all new features and changes that have reported compatibility impact, see the “Compatibility Summary for MATLAB Report Generator” on page 22.

Compatibility issues that are reported after the product has been released are added to Bug Reports at the MathWorks Web site. Because bug fixes can sometimes result in incompatibilities, also review fixed bugs in Bug Reports for any compatibility impact.

## **Fixed Bugs and Known Problems**

MathWorks Bug Reports is a user-searchable database of known problems, workarounds, and fixes. The MathWorks updates the Bug Reports database as new problems and resolutions become known, so check it as needed for the latest information.

Access Bug Reports at the MathWorks Web site using your MathWorks Account. If you are not logged in to your MathWorks Account when you link to Bug Reports, you are prompted to log in or create an account. You then can view bug fixes and known problems for R14SP2 and more recent releases.

The Bug Reports database was introduced for R14SP2 and does not include information for prior releases. You can access a list of bug fixes made in prior versions via the links in the summary table.

## **Related Documentation at Web Site**

**Printable Release Notes (PDF).** You can print release notes from the PDF version, located at the MathWorks Web site. The PDF version does not support links to other documents or to the Web site, such as to Bug Reports. Use the browser-based version of release notes for access to all information.

**Product Documentation.** At the MathWorks Web site, you can access complete product documentation for the current version and some previous versions, as noted in the summary table.

## Version 3.2.1 (R2007b) MATLAB Report Generator

This table summarizes what's new in Version 3.2.1 (R2007b):

<b>New Features and Changes</b>	<b>Version Compatibility Considerations</b>	<b>Fixed Bugs and Known Problems</b>	<b>Related Documentation at Web Site</b>
Yes Details below	No	Bug Reports Includes fixes	Printable Release Notes: PDF  Current product documentation

New features and changes introduced in this version are:

### **Text Formatting Options for Title Page, Text, and Paragraph Components**

This release includes new text formatting options for the Title Page, Text, and Paragraph components.

For more information, see the MATLAB® Report Generator documentation.



## Version 3.2 (R2007a) MATLAB Report Generator

This table summarizes what's new in Version 3.2 (R2007a):

<b>New Features and Changes</b>	<b>Version Compatibility Considerations</b>	<b>Fixed Bugs and Known Problems</b>	<b>Related Documentation at Web Site</b>
No	No	Bug Reports Includes fixes	Printable Release Notes: PDF  Current product documentation

There are no new features or changes in this version.

## Version 3.1 (R2006b) MATLAB Report Generator

This table summarizes what's new in Version 3.1 (R2006b):

<b>New Features and Changes</b>	<b>Version Compatibility Considerations</b>	<b>Fixed Bugs and Known Problems</b>	<b>Related Documentation at Web Site</b>
No	No	Bug Reports Includes fixes	No

There are no new features or changes in this version.

## Version 3.0.1 (R2006a+) MATLAB Report Generator

This table summarizes what's new in Version 3.0.1 (R2006a+):

<b>New Features and Changes</b>	<b>Version Compatibility Considerations</b>	<b>Fixed Bugs and Known Problems</b>	<b>Related Documentation at Web Site</b>
No	No	Bug Reports Includes fixes	No

## Version 3.0 (R2006a) MATLAB Report Generator

This table summarizes what's new in Version 3.0 (R2006a):

New Features and Changes	Version Compatibility Considerations	Fixed Bugs and Known Problems	Related Documentation at Web Site
Yes Details below	Yes—Details labeled as <b>Compatibility Considerations</b> , below. See also Summary.	Bug Reports Includes fixes	No

New features and changes introduced in this version are:

- “User Interface and Performance Enhanced” on page 8
- “XML File Format Changed” on page 8

### User Interface and Performance Enhanced

The Report Explorer interface has a number of enhancements. The **View** menu has commands to increase and decrease font size and to show the message window if it is not displayed.

MATLAB Report Generator performance has improved. Reports are often generated more rapidly and with less chance of running out of memory.

### XML File Format Changed

The format of XML files has changed in V3.0 (R2006a).

### Compatibility Considerations

In V3.0 (R2006a), Report Explorer and the `rptconvert` command can convert XML files produced by MATLAB Report Generator in V2.3.1 (R14SP3) and previous versions. However, in V2.3.1 (R14SP3) and previous versions, Report Explorer and the `rptconvert` command cannot convert XML files produced by MATLAB Report Generator in V3.0 (R2006a).

## Version 2.3.1 (R14SP3) MATLAB Report Generator

This table summarizes what's new in Version 2.3.1 (R14SP3):

New Features and Changes	Version Compatibility Considerations	Fixed Bugs and Known Problems	Related Documentation at Web Site
Yes Details below	No	Bug Reports Includes fixes	No

New features and changes introduced in this version are:

- “Stylesheets Modify PDF Headers and Footers” on page 9

### Stylesheets Modify PDF Headers and Footers

This release adds support for modifying the content of headers and footers in PDF reports. This feature is implemented using stylesheet cells and cell groups. A *cell group* contains one or more stylesheet cells. A *stylesheet cell* is a set of values that determine the content of a particular portion of the header or footer for a page.

Two cell groups, **Header Content** and **Footer Content**, are available for PDF reports. You can use templates to specify XML code that defines the content for a header or footer.

## Version 2.3 (R14SP2+) MATLAB Report Generator

This table summarizes what's new in Version 2.3 (R14SP2+):

New Features and Changes	Version Compatibility Considerations	Fixed Bugs and Known Problems	Related Documentation at Web Site
Yes Details below	No	Bug Reports Includes fixes	No

New features and changes introduced in this version are:

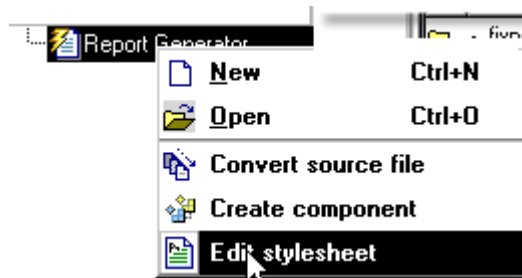
- “Stylesheet Editor” on page 10
- “Table Cell Spanning” on page 11
- “Generating Microsoft Word Documents as .doc Files” on page 11
- Annotation Loop component
- “Improved Graphical User Interface” on page 12

### Stylesheet Editor

You can use the Stylesheet Editor to customize the formatting of your HTML, PDF, and Word documents. For example, you can specify fonts, paper layout, table presentation, as well as other characteristics of your final report.

Customizing reports by editing stylesheets gives you the flexibility to create reports that conform to corporate style guidelines and requirements.

To open the Stylesheet Editor, right-click **Report Generator** in the Outline pane of the Report Explorer and then click **Edit Stylesheet** on the shortcut menu, as shown:



For more information about using the Stylesheet Editor, see “Creating Custom Stylesheets” in the MATLAB Report Generator documentation.

## Table Cell Spanning

You can use MATLAB Report Generator to create advanced table layouts for property tables. The advanced layouts include cells that span multiple rows or columns.

## Generating Microsoft Word Documents as .doc Files

You can use MATLAB Report Generator to generate reports that are saved as Microsoft Word documents with the .doc extension. You can also convert XML source files that are generated by MATLAB Report Generator to .doc files.

The reports you create are easier to distribute via e-mail, to share with others, and to manage.

You must have Microsoft Word installed to use this feature, and you must be using MATLAB Report Generator on a PC system.

To use this feature select **Word Document** from the **Stylesheet** drop-down list in the Convert Source File dialog box, as shown:

### Convert Source File

The Source File Converter transforms DocBook XML source files created by the Report Generator into a formatted document, such as HTML, RTF, or PDF.

Conversion Options

Source file:

File format:

Stylesheet:   
  
 View re

## Improved Graphical User Interface

This version of MATLAB Report Generator has the following changes and improvements to the graphical user interface:

- The File Converter has a **Source File** drop-down list. Click **Browse** to navigate to a directory to select a source file. The default directory is the current directory.
- In the File Converter, you can select a stylesheet from the drop-down list and click **Edit** to open the Stylesheet Editor.
- MATLAB Report Generator has an improved mechanism for detecting and displaying errors that occur when you attempt to add a component that makes the style hierarchy invalid. Users of earlier versions may notice that MATLAB Report Generator issues warnings for components that had no problems in earlier versions. In this release, warning messages contain instructions about how to fix the problem.
- The Figure Screen Capture component has been improved to capture window decorations such as menus, title bars, and toolbars.



## Version 2.2 (R14SP1+) MATLAB Report Generator

This table summarizes what's new in Version 2.2 (R14SP1+):

New Features and Changes	Version Compatibility Considerations	Fixed Bugs and Known Problems	Related Documentation at Web Site
Yes Details below	Yes—Details labeled as <b>Compatibility Considerations</b> , below. See also Summary.	No bug fixes	No

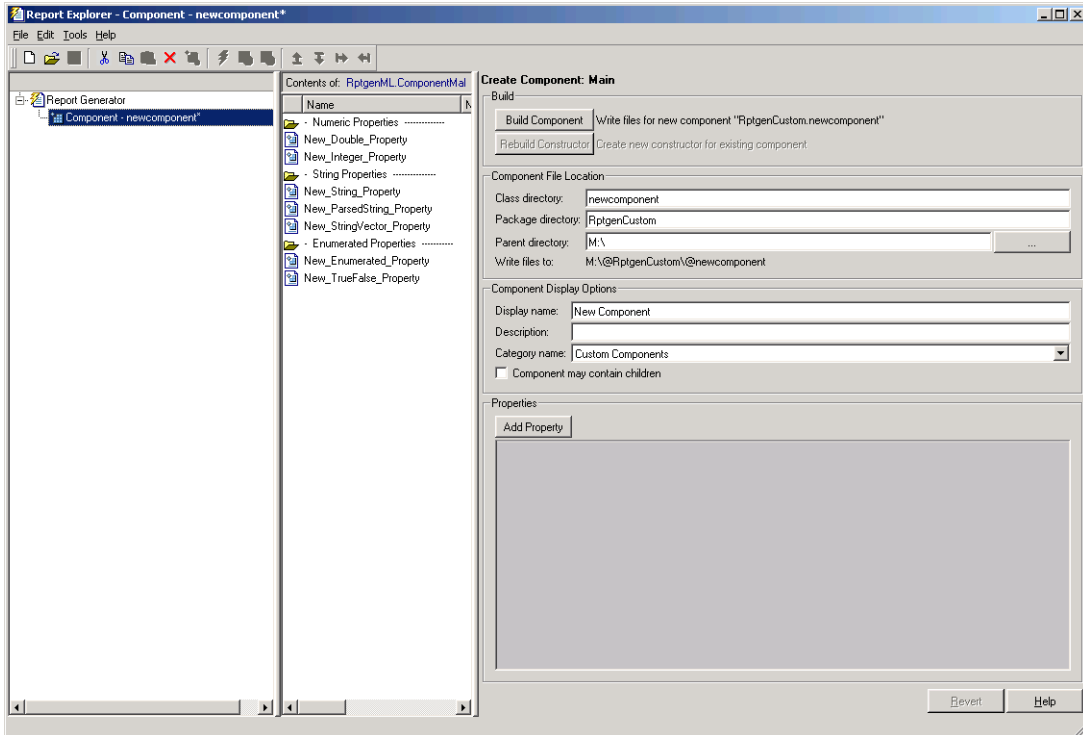
New features and changes introduced in this version are:

- “Component Creator” on page 13
- “64-bit Linux Platforms Supported” on page 15

### Component Creator

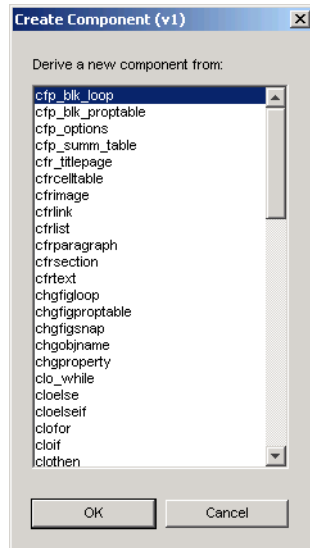
MATLAB Report Generator Version 2.2 provides the Component Creator, a tool which allows you to create custom components. The Component Creator had previously been available in MATLAB Report Generator Version 1, and is now being introduced in Version 2 of the product.

With the Component Creator you create a “skeleton” object, that is, the Component Creator sets up just the raw structure of the component. You create additional required executable M-code by editing one or more files that the Component Creator produces. A picture of the Component Creator, showing its three panes, as follows:



## Compatibility Considerations

Components created with MATLAB Report Generator Version 1 can be imported and used in Version 2. If you want to derive a component from an existing Version 1 component, the Report Explorer presents you with a list of components from which you can choose a component to modify. The list of components is similar to the following:



## 64-bit Linux Platforms Supported

MATLAB Report Generator now supports 64-bit Linux platforms.

## Version 2.1 (R14+) MATLAB Report Generator

This table summarizes what's new in Version 2.1 (R14+):

New Features and Changes	Version Compatibility Considerations	Fixed Bugs and Known Problems	Related Documentation at Web Site
Yes Details below	No	No bug fixes	No

New features and changes introduced in this version are:

- “Improvements to Images” on page 16
- “Improved PDF Support” on page 16
- “Support for Non-English Systems” on page 16
- “Japanese PDF Reports Require Font Registration” on page 16

### Improvements to Images

This version includes scaling and alignment control for high-quality bitmap Handle Graphics® images.

### Improved PDF Support

Improved PDF support includes:

- PDF stylesheet support for custom page headers and footers
- PDF title page stylesheet customization

### Support for Non-English Systems

This version has better support for Japanese and other non-English systems.

### Japanese PDF Reports Require Font Registration

For Japanese PDF support, you must register the file location of a Japanese language font with Report Generator. If generated PDF documents contain

unrecognizable characters, you must register that font. To register a font, use the `setPref` function:

```
RptgenML.setPref('rptgen.body.font.family.fontfile',  
'c:\winnt\fonts\msgothic.ttf');
```

This preference setting persists between sessions and only needs to be set once. If the preference is not set, a warning appears during PDF generation that the font must be set.

## Version 2.0 (R14) MATLAB Report Generator

This table summarizes what's new in Version 2.0 (R14):

New Features and Changes	Version Compatibility Considerations	Fixed Bugs and Known Problems	Related Documentation at Web Site
Yes Details below	Yes—Details labeled as <b>Compatibility Considerations</b> , below. See also Summary.	“Known Problems” on page 20	No

New features and changes introduced in this version are:

- “Updated User Interface” on page 18
- “Change to %<<varname>> Notation” on page 19
- “Improvements to Components” on page 19
- “New Components” on page 19

### Updated User Interface

The user interface has been enhanced to let you do the following:

- View, create, and edit setup files
- Generate reports
- Convert XML source files to various outputs, including HTML and RTF

### Compatibility Considerations

The original version of MATLAB Report Generator is still available and can be accessed via the MATLAB command line. To open the previous version of the MATLAB Report Generator interface, enter `RptgenML.v1mode(true)` at the command line. To use the new version of the MATLAB Report Generator interface, enter `RptgenML.v1mode(false)` at the command line.

The previous version switch is session-dependent. To always use the previous version of Report Generator, add `RptgenML.v1mode(true)` to your `startup.m` file.

## Change to %<<varname>> Notation

The %<<varname>> notation imports text with no collapsed representation.

## Improvements to Components

These components have been improved:

- Looping components intrinsically create sections and anchors.
- Handle Graphics Property and MATLAB Variable components provide increased control over output formatting.
- All summary tables support manual property names and column widths.
- Chapter/Subsection component can manually set the chapter number.
- Image component supports captions.
- Table component can override collapsed representation.
- Title Page component can be used without Chapter components.
- Figure Snapshot component supports titles and captions.
- Nest Setup File component can import multiple files by name.
- Documentation component can import HTML and RTF documents.

## New Components

These components have been added:

- Axes Loop
- Axes Snapshot
- Handle Graphics Object Anchor
- Handle Graphics Summary Table
- Object Loop

- MATLAB Property Table
- To Workspace Block

## **Known Problems**

This release has these known problems.

- “Editing Workspace Variable Names in List Component” on page 20
- “Script Generation Fails for Property Tables” on page 20
- “Report Explorer Appears Blank” on page 20

### **Editing Workspace Variable Names in List Component**

When editing the workspace variable names in the List component, you must enclose the workspace variable name in single quotation marks. (216777)

### **Script Generation Fails for Property Tables**

The Generate M-File... option in the Report Explorer creates a script that causes an error if the setup file contains any property table components. The scripts are valid, but the code libraries which they call are broken. (217678)

### **Report Explorer Appears Blank**

While using Report Generator, the Report Explorer might appear blank with no visible content. If this happens, create a new setup file. The list of components or setup files should appear in the Options palette. (210869)



## Version 1.3 (R13) MATLAB Report Generator

This table summarizes what's new in Version 1.3 (R13):

New Features and Changes	Version Compatibility Considerations	Fixed Bugs and Known Problems	Related Documentation at Web Site
Yes Details below	No	No bug fixes	Yes

New features and changes introduced in this version are:

- “Table Column Widths Can Be Specified” on page 21
- “Text Can Be Imported from RTF and HTML Files” on page 21
- “Component Inserts Text from Doc Blocks” on page 21

### Table Column Widths Can Be Specified

In the Cell Table component, you can now specify table column widths.

### Text Can Be Imported from RTF and HTML Files

The Import File component can now import formatted text from RTF and HTML source files.

### Component Inserts Text from Doc Blocks

A new Documentation component inserts text extracted from Doc Blocks in Simulink® models.

## Compatibility Summary for MATLAB Report Generator

This table summarizes new features and changes that might cause incompatibilities when you upgrade from an earlier version, or when you use files on multiple versions. Details are provided in the description of the new feature or change.

<b>Version (Release)</b>	<b>New Features and Changes with Version Compatibility Impact</b>
<b>Latest Version V3.2.1 (R2007b)</b>	None
V3.2 (R2007a)	None
V3.1 (R2006b)	None
V3.0.1 (R2006a+)	None
V3.0 (R2006a)	See the <b>Compatibility Considerations</b> subheading for this new feature or change: “XML File Format Changed” on page 8
V2.3.1 (R14SP3)	None
V2.3 (R14SP2+)	None
V2.2 (R14SP1+)	See the <b>Compatibility Considerations</b> subheading for this new feature or change: “Component Creator” on page 13
V2.1 (R14+)	None
V2.0 (R14)	See the <b>Compatibility Considerations</b> subheading for this new feature or change: “Updated User Interface” on page 18
V1.3 (R13)	None